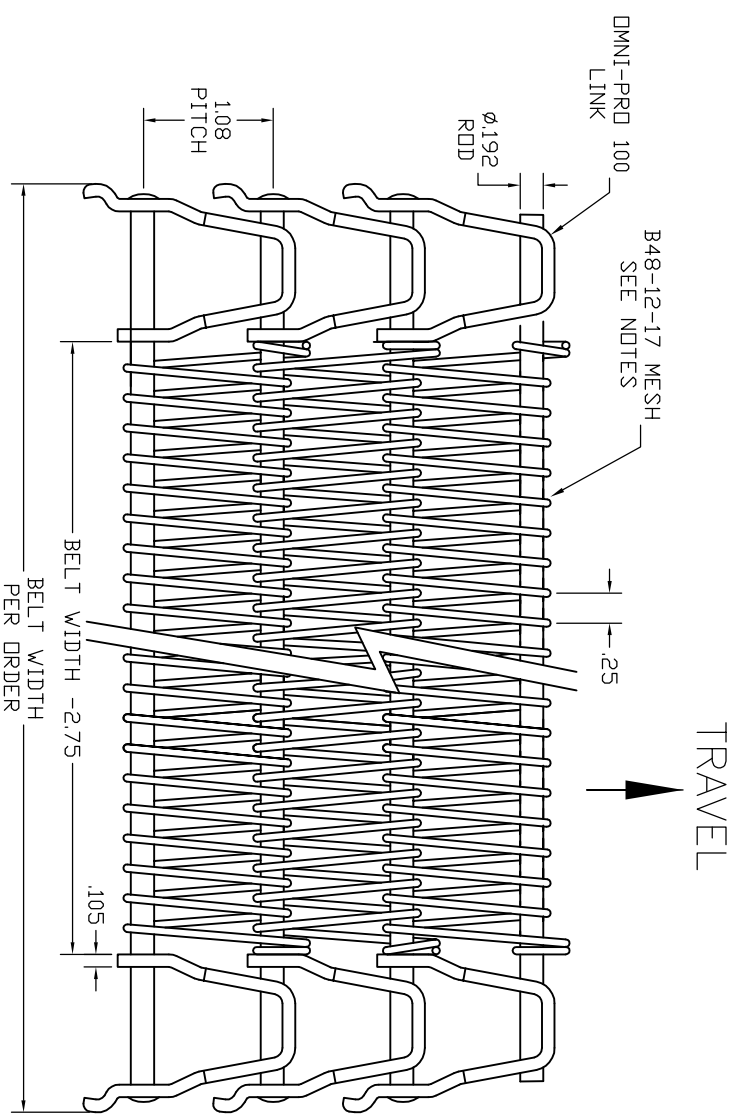


REVISION HISTORY			
REV	DESCRIPTION	DATE	APPROVED
A	ORIGINAL DRAWING		

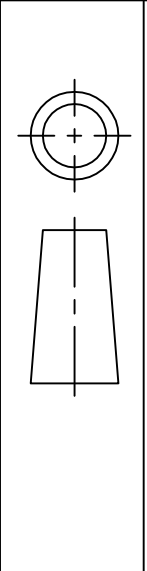


MESH DESIGNATION B48-12-17:
 B = BALANCED WEAVE
 48 = LATERAL (WIDTH) MESH PITCH = 48 LOOPS PER FOOT (NOMINAL)
 12 = LONGITUDINAL (LENGTH) MESH PITCH = 12 PITCHES PER FOOT (NOMINAL)
 17 = MESH WIRE GAGE = ϕ .054"
 LINK THICKNESS = 1/2 INCH

UNLESS OTHERWISE SPECIFIED DIMENSIONS ARE IN INCHES

TOLERANCES	FRACTION $\pm 1/16$
DEC. X = $\pm .03$	
.XXX = $\pm .015$	
.XXX = $\pm .005$	
.XXXX = $\pm .0005$	ANGLE $\pm 1/2^\circ$

THIRD ANGLE PROJECTION



THIS DRAWING CONTAINS CONFIDENTIAL INFORMATION AND TRADE SECRETS OF ASHWORTH BROS., INC. IT MAY NOT BE REPRODUCED IN WHOLE OR IN PART, OR USED FOR THE BENEFIT OF ANYONE OTHER THAN ASHWORTH BROS., INC. NO RIGHT IS GRANTED TO DISCLOSE, OR USE ANY INFORMATION SHOWN ON THIS DRAWING

DRAWN/DATE	JRL 12/22/09
CHECKED/DATE	JRL 12/22/09
ORIGINATOR/DATE	JRL 12/22/09
CONTRACT NO	--

		ASHWORTH BROS., INC. BELT DIVISION 450 ARMOUR DALE, WINCHESTER, VA 22601	
TITLE ILLUSTRATION		OMNI-PRO 100, B48-12-17 MESH	
SIZE	CAGE CODE	DWG NO	REV
A	NTS	29-4421	A
SCALE	WEIGHT	SHEET	1 OF 1
NTS	--	1	1

UNCONTROLLED COPY
 FOR MANUFACTURE OR PURCHASE